

COMPANY PROFILE

Helping **Brands** Lead  
The **Digital Future...**

# About

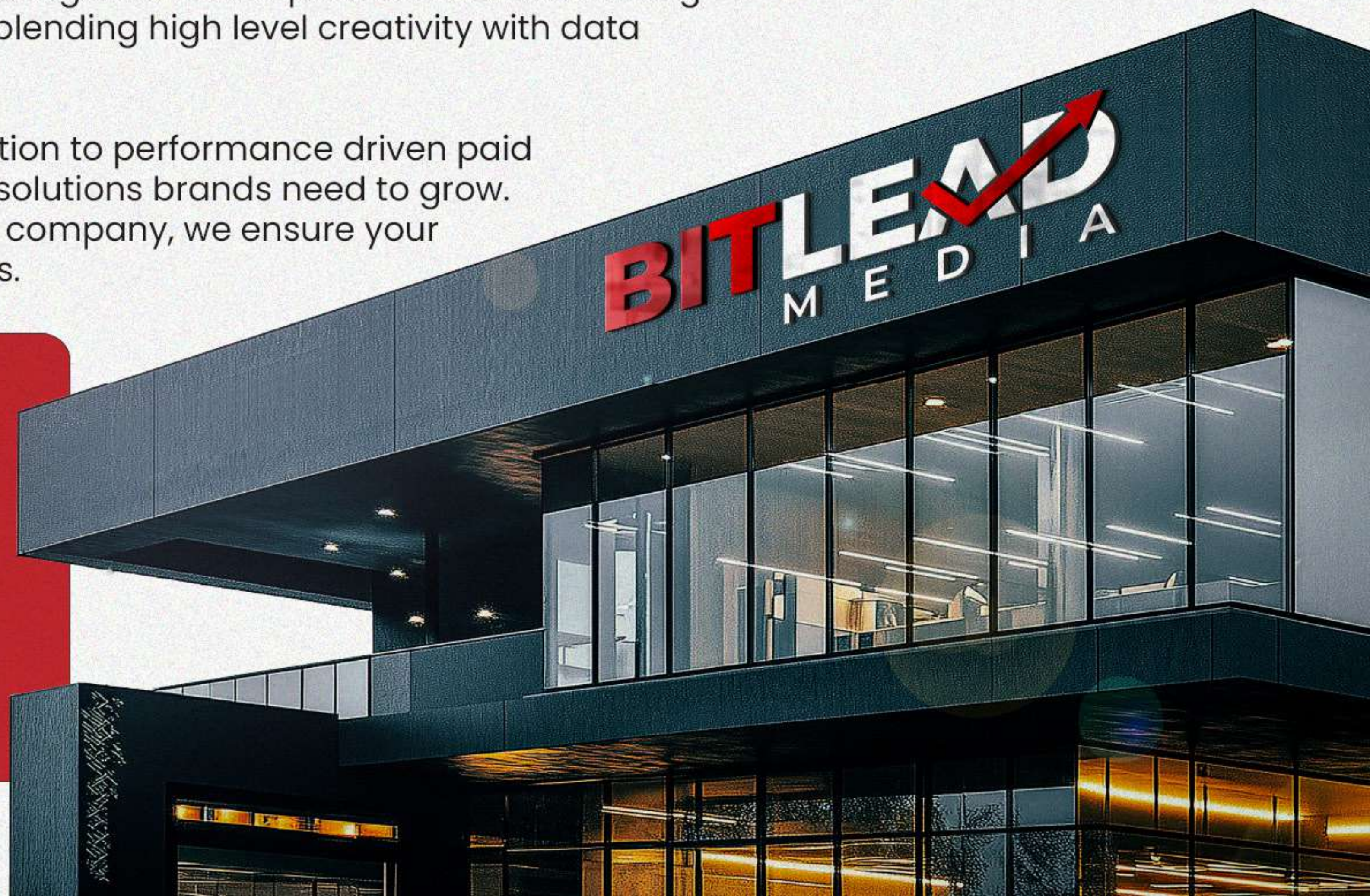
## Our Company

Bitlead Media is a dynamic marketing agency focused on building powerful digital presences through strategic social media management. We specialize in transforming corporate accounts into industry leaders by blending high level creativity with data driven consistency.

From impactful storytelling and content creation to performance driven paid campaigns, we provide the full-stack digital solutions brands need to grow. Whether you are a startup or an established company, we ensure your brand doesn't just post it connects & converts.

## Our Mission

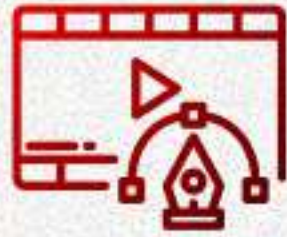
Our mission is to empower brands through innovative digital strategies and creative storytelling. By merging technology with high-impact design, we help businesses build lasting value, drive growth, and lead in an ever-evolving digital world.



# SERVICES

## Categories

### Creative & Communication



Elevating brand identity through innovative messaging and strategic creative direction

### Search Engine Optimization (SEO)



Boost your online presence and climb search rankings to drive quality organic traffic

### Digital Marketing



Strategic digital campaigns that connect your brand with audiences across all platforms

### Social Media Management



Building and engaging your community through strategic content and data-driven growth

### Influencer Marketing



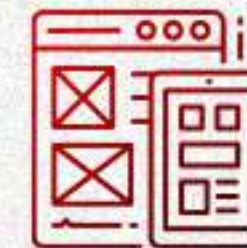
Leverage influential voices to amplify your brand message and reach targeted audiences

### UGC Content Creation



Authentic user-generated content that drives engagement and builds genuine connections

### UI & UX Design



Creating intuitive, high-fidelity interfaces that blend seamless user journeys with stunning aesthetics.

### Website & App Development



Building high-performance, scalable digital solutions with seamless functionality and clean code.

# Our Work Process

At Bitlead Media, we believe that success comes from a structured, collaborative, and client-centric approach. Here's how we work with you to deliver impactful solutions

**Discovery & Insights:** Deep-diving into your brand DNA to uncover growth opportunities.



**Strategic Planning:** Crafting a custom, data-driven roadmap tailored to your business goals.



**Creative Execution:** Bringing ideas to life through high-fidelity design and innovative digital solutions.



**Implementation & Launch:** Executing strategies across all platforms for seamless delivery & maximum engagement.



**Measurement & Scaling:** Analyzing real-time data to deliver insights that drive long-term digital success.



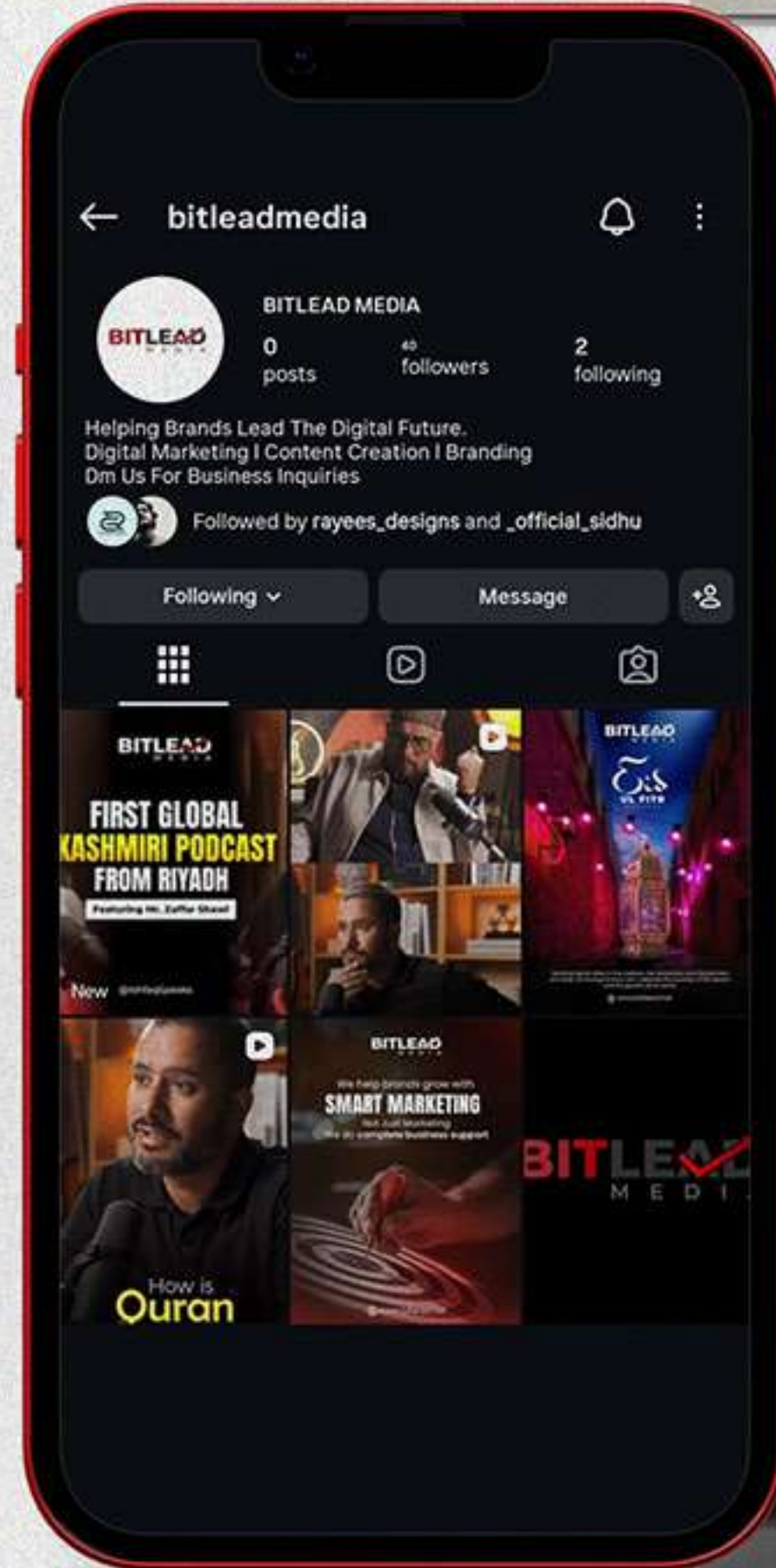
With our structured process, Insights Marketing & Communication ensures that every project we undertake is a step toward achieving your brand's full potential.

Lets Work **Together!**

# Our Work Portfolio

## SOCIAL MEDIA Post Design

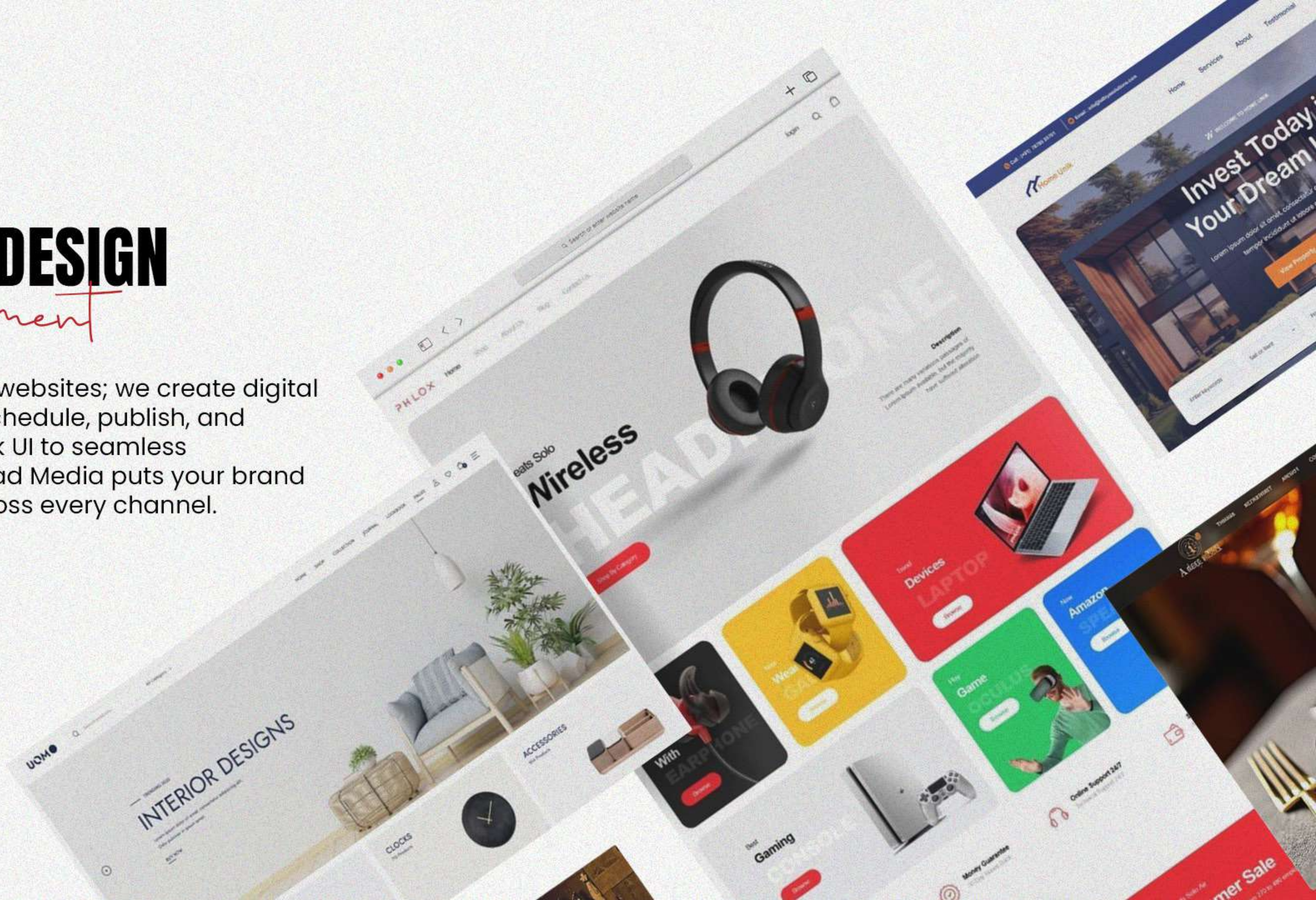
With Bitlead Media you've got everything you need to seamlessly schedule or instantly publish across all your social channels.



# WEBSITE DESIGN

## Development

We don't just build websites; we create digital experiences that schedule, publish, and perform. From sleek UI to seamless development, Bitlead Media puts your brand in the spotlight across every channel.



# OUR NOTABLE *Partners*



We take pride in our diverse network of partners who trust us to elevate their online presence. Whether it's a high-performance website or a comprehensive digital strategy, Bitlead Media delivers the professional edge your business deserves.

Contact

# Bitlead Media

We're excited about the opportunity to collaborate and turn your vision into reality. Let's craft something amazing together.



## CONTACT US :

☎ +966 58 302 6867

✉ info@bitlead.net

🌐 www.bitlead.net

📍 Al Olaya, Riyadh, Saudi Arabia

